



# Pathways to the Professions



Opening the Doors  
to Higher Education

The University of **Edinburgh**





THE UNIVERSITY of EDINBURGH

student recruitment & admissions

[www.sra.ed.ac.uk](http://www.sra.ed.ac.uk)

# Pathways to the Professions

Opening the door to careers in Law, Medicine, Veterinary Medicine and Architecture

student recruitment & admissions

[www.sra.ed.ac.uk](http://www.sra.ed.ac.uk)

## Programme

- Welcome and Introduction to Pathways to the Professions / Reach
- Choosing a Course, and the Application Process
- Finance & Funding
- Subject Discussion Groups
- Opportunity for informal discussion



THE UNIVERSITY of EDINBURGH

The University of **Edinburgh**





# Where are we?





# UoE Strategic Plan

## Strategic theme: Equality and Widening Participation

“To create and maintain a diverse community of students and staff, thereby enriching the learning, working and social experience for all and demonstrating our commitment to social justice.”

The University of **Edinburgh**  
opening the doors to higher education







# Project Overview

- Pathways and Reach give **information, support and advice** to state school students re **Law, Medicine, Veterinary Medicine and Architecture** working with the subject areas, schools, families and the professional bodies
- **Pathways** targets state schools in **Edinburgh and the Lothians (46)** – open to all students with eligibility criteria for certain events.
- **Reach** works with target schools in the **Scottish Borders and Forth Valley**

The University of **Edinburgh**  
opening the doors to higher education





# Schools Programme

**S4-S6** Information and advice on course and extra curricular requirements/career exploration for students, their families and advisers

**S4** Course choice event

**S4/S5** Parents' information sessions

**S5** 'So You Want to be a Lawyer/Doctor/Vet/Architect' Careers Days

Priority invitations to public lectures / workshops

The University of **Edinburgh**  
opening the doors to higher education







# Schools Programme

- S5 Kickstart Summer Programmes in Science or the Humanities and Social Sciences (Midlothian, East Lothian, West Lothian and Reach)
- S6 1:1 pre UCAS guidance (phone / email)
- S6 LEAPS interview and invitations to LEAPS Summer School (if LEAPS eligible)
- S6 Personal Statement workshops

Ongoing information by phone, email, Facebook, Twitter, texts, online, [askastudent@ed.ac.uk](mailto:askastudent@ed.ac.uk)

The University of **Edinburgh**  
opening the doors to higher education





# Student voices

*“I never really knew much about what becoming a Lawyer would involve”*

*“I chose Edinburgh not just for the prestige of medicine but because through Pathways I already felt part of the University”*

*“without [the project] I would be more in the dark and unsure of where to go for help”*

The University of **Edinburgh**  
opening the doors to higher education





# Pathways to the Professions

*Opening the door to careers in Law, Medicine,  
Veterinary Medicine and Architecture*

10<sup>th</sup> Anniversary Film

The University of **Edinburgh**  
opening the doors to higher education





## Choosing a course and the application process







# The UCAS System

- Application system for degree (and HNC/D) courses at any UK University or Higher Education college
- Can apply electronically via *ucasapply* system (paper applications not normally accepted)
- One application for up to **FIVE** courses (four max. for Dentistry, Medicine & Vet Medicine)
- Application to be completed by 15 January of the year of entry, except for:

**Dentistry, Medicine & Vet Medicine** applications or applications to **Oxford or Cambridge**, where the deadline is **15 October** the year before entry.

The University of **Edinburgh**  
opening the doors to higher education





# Choosing your Law School

10 LLB providers in Scotland:

Aberdeen; Abertay; Dundee; Edinburgh; Glasgow; Glasgow Caledonian; Napier; Robert Gordon; Stirling; Strathclyde

- 5 recently accredited courses
- vary in size, applications and entry requirements

26 week post graduate Diploma courses in Scotland:

Aberdeen, Dundee, Edinburgh, Glasgow, Strathclyde and the Robert Gordon University after LLB degree for those wishing to practise law

Highly competitive entry to Diploma – performance in first 2 years of LLB

The University of **Edinburgh**  
opening the doors to higher education







# Entry Requirements

## Law at **Edinburgh**

- Typical Offer likely to be AAAA (MINIMUM BBBB to enter the selection process)
- English Higher essential
- Maths OR Science at N5 C / SG 3 / Int 2 C or better
- AHs expected

The University of **Edinburgh**  
opening the doors to higher education





# Choosing your Architecture Course

5 Higher Education providers in Scotland offer degrees in Architecture:

Dundee; Edinburgh; Robert Gordon;  
Strathclyde; Glasgow School of Art

- vary in size, applications and entry requirements
- some request interviews / portfolios

The University of **Edinburgh**  
opening the doors to higher education







# Entry Requirements

## Architecture at **Edinburgh**

- Typical Offer likely to be AAAA (MINIMUM BBBB to enter the selection process)
- English at N5 C / SG 3 / Int 2 C, plus Maths N5 A / SG 1 / Int 2 A OR both Maths and Physics N5 B / SG 2 / Int 2 B
- Evidence of artistic ability required (Art & Design or equivalent at least at N5 / Int 2 / SG - no portfolio requested)

The University of **Edinburgh**  
opening the doors to higher education



# Choosing your Medical School

28 in UK, 5 in Scotland:

Edinburgh; Glasgow; Aberdeen; Dundee; St Andrews

- all excellent
- vary in size
- vary in applications
- vary in teaching methods

5 years at Edinburgh, Glasgow, Aberdeen & Dundee  
(6 years with an **intercalated** degree)

St Andrews 3 years + 3 at Manchester/another Scottish  
Medical School

All interview with exception of Edinburgh\* (in most cases)

\*this **may** change in the future (2016 entry or beyond)

The University of **Edinburgh**  
opening the doors to higher education







# Medicine Admissions

Academic Criteria – Scottish Medical Schools:

- **Highers:** minimum entry requirement of AAAAB (AAABB at Dundee; AAAAA at Glasgow)
- **Essential Highers:** **Chemistry** (and, in most cases, TWO from Biology, Maths & Physics)
- At least **3 subjects**, with at least **2 Advanced Highers** expected in S6 (some specifically recommend Chemistry and Biology)
- All Scottish universities likely to place **requirements on Advanced Highers**
- Selectors are likely to also take into account **N5 / Int 2 / SG**, as well as **predictions for S6**
- UKCAT Score

The University of **Edinburgh**  
opening the doors to higher education





# UKCAT

The UK Clinical Aptitude Test (UKCAT) is used in the selection process by a consortium of 24 UK university Medical and Dental Schools including all 5 Scottish Medical Schools.

Registration opened:	<b>1 May 2014</b>
Testing begins:	<b>1 Jul 2014</b>
Bursary deadline:	<b>19 Sep 2014</b>
Registration deadline:	<b>19 Sep 2014</b>
Last test date:	<b>3 Oct 2014</b>

Register at [www.ukcat.ac.uk](http://www.ukcat.ac.uk)

Sitting test costs £65 before 31 August  
(£80 after this date)

**Check emails for invite to UKCAT workshop – 20<sup>th</sup> June or 4<sup>th</sup> July!**

The University of **Edinburgh**  
opening the doors to higher education





# Choosing your Vet Medicine School

8 in UK, 2 in Scotland:

Edinburgh; Glasgow; Bristol; Cambridge;  
Liverpool; Nottingham; Royal Veterinary  
College, London; Surrey

- all excellent
- varying entry requirements
- English universities often primarily consider performance in 3 Advanced Highers
- All normally interview

The University of **Edinburgh**  
opening the doors to higher education





# Entry Requirements

## Vet Medicine at **Edinburgh**:

- Minimum AAAAB at one sitting in S5 including Chemistry and TWO from Biology, Physics & Maths (Physics at least to N5 / Int 2 / SG)
- AH essential-Chemistry plus one other science at BB – Biology preferred)
- Career exploration and evidence of commitment essential

The University of **Edinburgh**  
opening the doors to higher education







# What are Admissions Staff Looking For?

## Non- Academic Criteria:

- personal qualities
- career exploration
- Extra curricular achievements

## Looking for applicants who are

- Informed; Motivated; Organised; Interested in others; and have Good communication skills; Team working & leadership abilities

## All are highly competitive

- AAAAA provides no guarantees
- Always have a Plan B.

The University of **Edinburgh**  
opening the doors to higher education





# Med/Vet Med 5<sup>th</sup> choice course/career options:

Biological Sciences, eg:

Genetics, Immunology, Zoology, Plant Science, Cell Biology, Vet Biosciences, Animal Science

Chemistry:

Biochemistry; Medicinal and Biological Chemistry

Biomedical Sciences, eg:

Neuroscience; Pharmacology; Physiology; Reproductive Biology

**5<sup>th</sup> choice must be SAFE and REALISTIC!**

The University of **Edinburgh**  
opening the doors to higher education





# How to find out more

- ✓ Publications: Prospectuses, UCAS guide, Course leaflets, Independent guides
- ✓ Internet
- ✓ Careers library
- ✓ Higher Education Conventions
- ✓ Open Days

The University of **Edinburgh**  
opening the doors to higher education







# Student Finance: The Basics





# SAAS Who?

- SAAS: Student Award Agency for Scotland
- An agency of the Scottish Government
- Provides financial support to all eligible students doing a course of higher education in the UK
- This will focus on studying in SCOTLAND

The University of **Edinburgh**  
opening the doors to higher education







# SAAS Eligibility

## ‘Ordinarily resident’

You can check your eligibility on the SAAS website ([www.saas.gov.uk](http://www.saas.gov.uk))

## Residence Conditions:

“To meet the general residence conditions, you must have been ordinarily resident in the United Kingdom, the Channel Islands or the Isle of Man for the three years immediately before the first day of the first academic year of the course (the relevant date). For the majority of students who start their course in the autumn term, the relevant date is 1 August.

You must also be ordinarily resident in Scotland on the relevant date.”

*SAAS website, June 2014*

The University of **Edinburgh**  
opening the doors to higher education







# SAAS Tuition Fees

If eligible AND studying in Scotland:

## 1. Cover Tuition Fees

- SAAS pay tuition fees directly to college/university
- You do not pay these back
- You **need to apply to SAAS** for them to do this
- You need to apply before **every year** of your course

The University of **Edinburgh**  
opening the doors to higher education





# SAAS Living Costs

If eligible AND studying in Scotland:

## 2. Provide support for Living Costs

Dependant upon:

- household income

### Bursary

- You DO NOT pay back the bursary

### Loans

- minimum non-income assessed loan
- income assessed loan
- You DO pay back loans

The University of **Edinburgh**  
opening the doors to higher education



# Living costs 2014

Students normally resident in Scotland

Young students			
Household income	Bursary	Loan	Total
£0 to £16,999	£1,750	£5,750	£7,500
£17,000 to £23,999	£1,000	£5,750	£6,750
£24,000 to £33,999	£500	£5,750	£6,250
£34,000 and above	£0	£4,750	£4,750

The University of **Edinburgh**  
opening the doors to higher education







# SAAS Payments

- Bursary entitlements & loans are paid in monthly instalments over the **academic year**
- Receive a Loan Payment Schedule a month before course starts
- Payments run over the course start & end dates (not over the summer)
- 1<sup>st</sup> instalment on the first day of your course (double instalment)
- Then usually paid on 7<sup>th</sup> of every month

The University of **Edinburgh**  
opening the doors to higher education



# Loan Repayment

- SLC (Student Loan Company) manage the **loan** once applied for through SAAS
- Start repaying **April** after you graduate or leave the course
- Repay 9% of your annual income over £16,910
- Automatically comes off your pay
- Interest linked to inflation, but subsidised
- “Good” debt
- Repayments stop if your earnings drop below the limit

The University of **Edinburgh**  
opening the doors to higher education



# Repayment Examples

Annual salary = £20,000

Income above £16,910 = £3,090

So, 9% of £3,090

Split over 12 months = £23.18 per month –  
from a monthly after-tax salary of around  
£1,300

Annual salary = £30,000

£98.18 per month from a monthly after-  
tax salary of around £1,900

The University of **Edinburgh**  
opening the doors to higher education





The logo consists of the word "SAAS" in white, bold, sans-serif capital letters centered on a dark blue rectangular background. Below this rectangle is a thin white horizontal line, followed by another dark blue rectangular area.

SAAS

## How do you apply?

- Apply online via SAAS
- [www.saas.gov.uk](http://www.saas.gov.uk)
- Apply from the April of year of entry
- **Can** apply with a conditional offer
- Apply before 30<sup>th</sup> June to ensure funding is in place before you start!
- Apply **every year**



# Other sources of support

- University Bursaries & sponsorship
- Supplementary grants
- Discretionary Loans & Funds
- Savings
- Overdraft/credit card
- Part-time job
- Working (perhaps full-time) during summer breaks

The University of **Edinburgh**  
opening the doors to higher education



### Overview

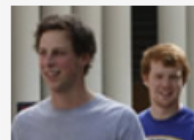
Bursaries are non-repayable awards based on criteria such as income, background and personal circumstances, and in some cases geographical area.



#### Access Bursaries for UK students

For UK undergraduate  
students.

› [Access Bursaries](#)



#### The University of Edinburgh Bursaries

For domiciled students  
from England, Wales and Northern Ireland.

› [University of Edinburgh Bursaries](#)



#### Scotland Accommodation Bursaries

For Scotland domiciled  
students who are living away from home.

› [Scotland Accommodation Bursaries](#)



#### Lloyds Scholars Programme

Awards at Edinburgh  
from the Lloyds Banking  
Group.

› [Lloyds Scholars Programme](#)



#### Edinburgh UNITE Accommodation Bursaries

For students staying in accommodation at  
Portsburgh Court.

› [Edinburgh UNITE Accommodation  
Bursaries](#)



#### ICAS Foundation Bursaries

Bursaries for qualifying  
students resident in  
Scotland studying Accountancy, Finance or  
Management

› [ICAS Foundation Bursaries](#)



# University of Edinburgh Accommodation Bursaries

- Scotland domiciled students living away from home (who are **eligible for a guarantee of University accommodation**)
- Granted **automatically** for each year of study to those receiving a Young Students' Bursary (YSB) or Independent Students' Bursary (ISB)

## For students entering in 2014

Government Bursary	Level of Government Bursary	Scotland Accommodation Bursary
Young Students' Bursary	£1,750	£2,000
	£1,000	£1,000
	£500	£500
Independent Students' Bursary	£750	£2,000

- Paid directly to Accommodation Services if in University accommodation OR to your bank account if in private accommodation



Prospective undergraduates
Prospective postgraduates
<b>Other financial support</b>
Current students
Staff Scholarships
About us
News and events
Scholarships search
Feedback form

## Scottish trusts

### Overview

**A list of charitable trusts to assist Scottish students.**

- > [City of Dundee Educational Trust](#)
- > [Colonel Maclean Trust Scheme 1980 and Logan and Johnston School Scheme 1988](#)
- > [Dumfriesshire Educational Trust](#)
- > [East Lothian Educational Trust](#)
- > [Glasgow Educational and Marshall Trust](#)
- > [John Watson's Trust](#)
- > [Maxton Bequest](#)
- > [Menzies Bursaries](#)
- > [Miss Isabella MacDougall's Trust](#)
- > [Moray Council Educational Trusts](#)
- > [Perth and Kinross Educational Trust](#)
- > [Renfrewshire Educational Trust](#)
- > [Stirlingshire Educational Trust](#)
- > [The Carnegie Trust for the Universities of Scotland](#)
- > [The Cross Trust](#)
- > [The Highland Children's Trust](#)
- > [The Royal Caledonian Schools Trust](#)
- > [The South of Scotland Youth Awards Trust](#)

### Overview

City of Dundee Educational Trust

Maclean Trust and Logan and Johnston School

Dumfriesshire Educational Trust

East Lothian Educational Trust

Glasgow Educational and Marshall Trust

John Watson's Trust

Maxton Bequest

Menzies Bursaries

Miss Isabella MacDougall's Trust

Moray Council Educational Trusts

Perth and Kinross Educational Trust

Renfrewshire Educational Trust

Stirlingshire Educational

Scholarships and Student Funding home

Prospective undergraduates

Prospective postgraduates

**Other financial support**

Current students

Staff Scholarships

About us

News and events

Scholarships search

Feedback form

University home > Schools & departments > Scholarships and Student Funding > Other financial support > Charitable trusts > National trusts > **The Vegetarian Charity**

## National trusts

# The Vegetarian Charity

Grants for people up to the age of 25 in financial need who are vegetarian or vegan. The Charity can also award grants for children being brought up to be vegetarian where the parents are in financial need.

Students can apply for one-off and recurrent grants for specific courses or projects ranging from £100 to £1000. Grants are also given to mature students for child care costs/school uniform etc

For an application form contact The Vegetarian Charity.

### **The Vegetarian Charity**

The Grants Secretary

PO Box 473

Crewe , CW3 0WU

Email: [grantssecretary@vegetariancharity.org.uk](mailto:grantssecretary@vegetariancharity.org.uk)

Web: [www.vegetariancharity.org.uk](http://www.vegetariancharity.org.uk)

Overview

BrightsideUNIAID

Educational Grants Advisory Service

RIBA Hardship Funds- Students of Architecture

The Leverhulme Trade Charities Trust

The Gen Foundation Scholarships

The Studley College Trust

The Thomas Wall Trust

The UK eInformation Group

**The Vegetarian Charity**

Women's Careers Foundation





# Question time: **Subject Discussion Groups**

