



Welcome!





Coming Up

- Introduction to the University
- Degree Structure
- What Happens Next?
- Student Finance
- “At University...” (Student Support)
- Student Life & Accommodation
- Student Panel Session
- Q&A session
- Informal discussion

The University of **Edinburgh**





The University of Edinburgh - An Introduction

Kathleen Hood



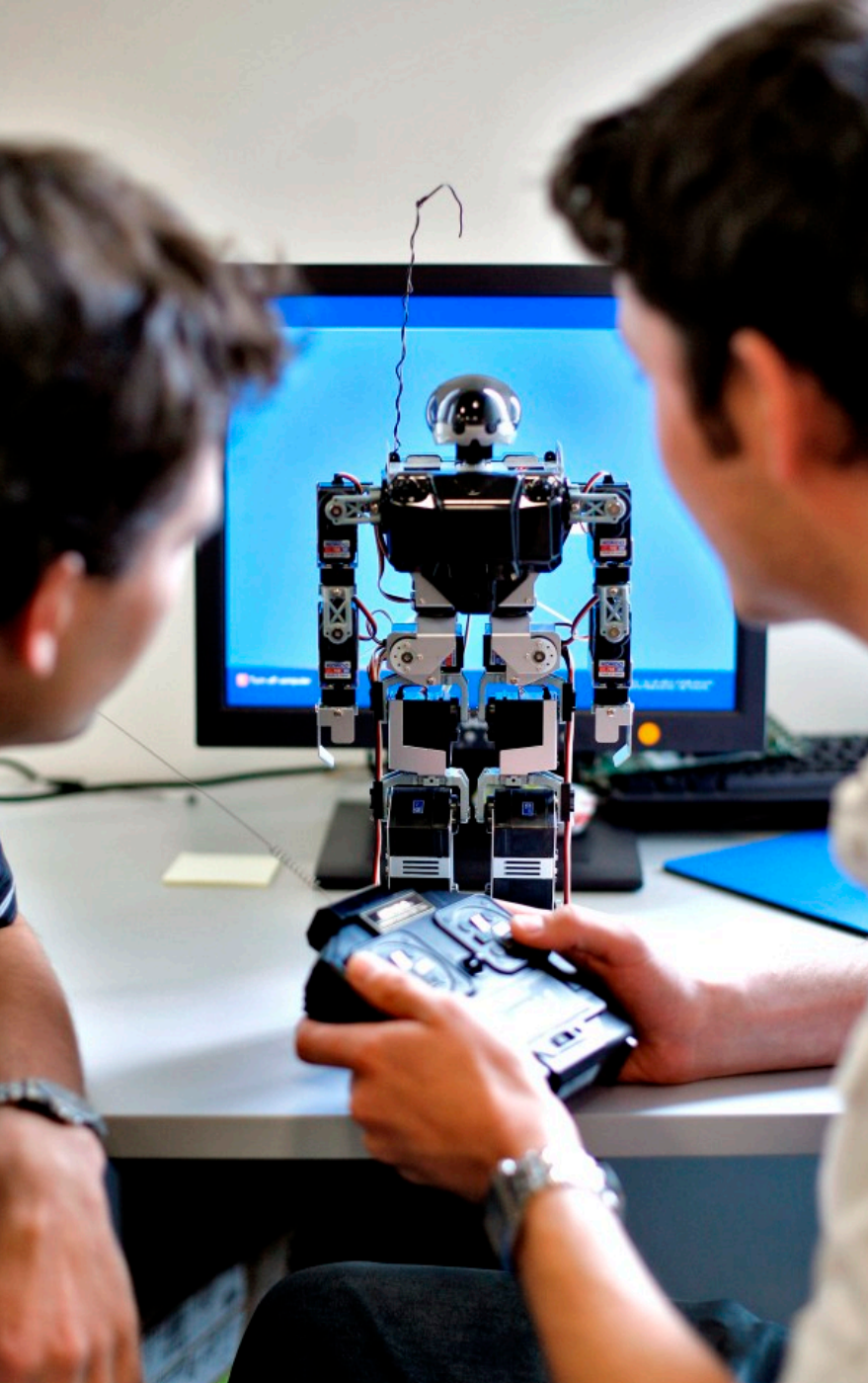


Facts and Figures

- Established 1583
- Over 18,000 undergraduate students from more than 140 different countries
- 3 Colleges with 22 Schools, offering c500+ degree courses
- Teaching and student facilities spread across the heart of the city

The University of **Edinburgh**





Excellence in Teaching & Research

International reputation for high quality of teaching & research:

- 63% of the University's research activity is in the highest categories (4* and 3*)
- top 5 in the UK and number one in Scotland by volume of 4* 'world-leading' research
- Placed 7th in Europe, and 40th in the World in Times Higher World University Rankings 2010
- spin-off companies created from cutting-edge research activities

The University of **Edinburgh**





Learning Resources

- Students have access to one of the largest academic libraries in the world. Founded in 1580 and spread across 17 different sites – the libraries hold 3 million volumes and over 600,000 electronic books and journals (accessible 24/7).
- Ongoing £60 million refurbishment of Main Library including study pods and new café.
- All students have access to the University network through computer labs (some open 24hrs a day). Many areas of the University now have WiFi access.
- Easy access to city's excellent learning facilities.

The University of **Edinburgh**



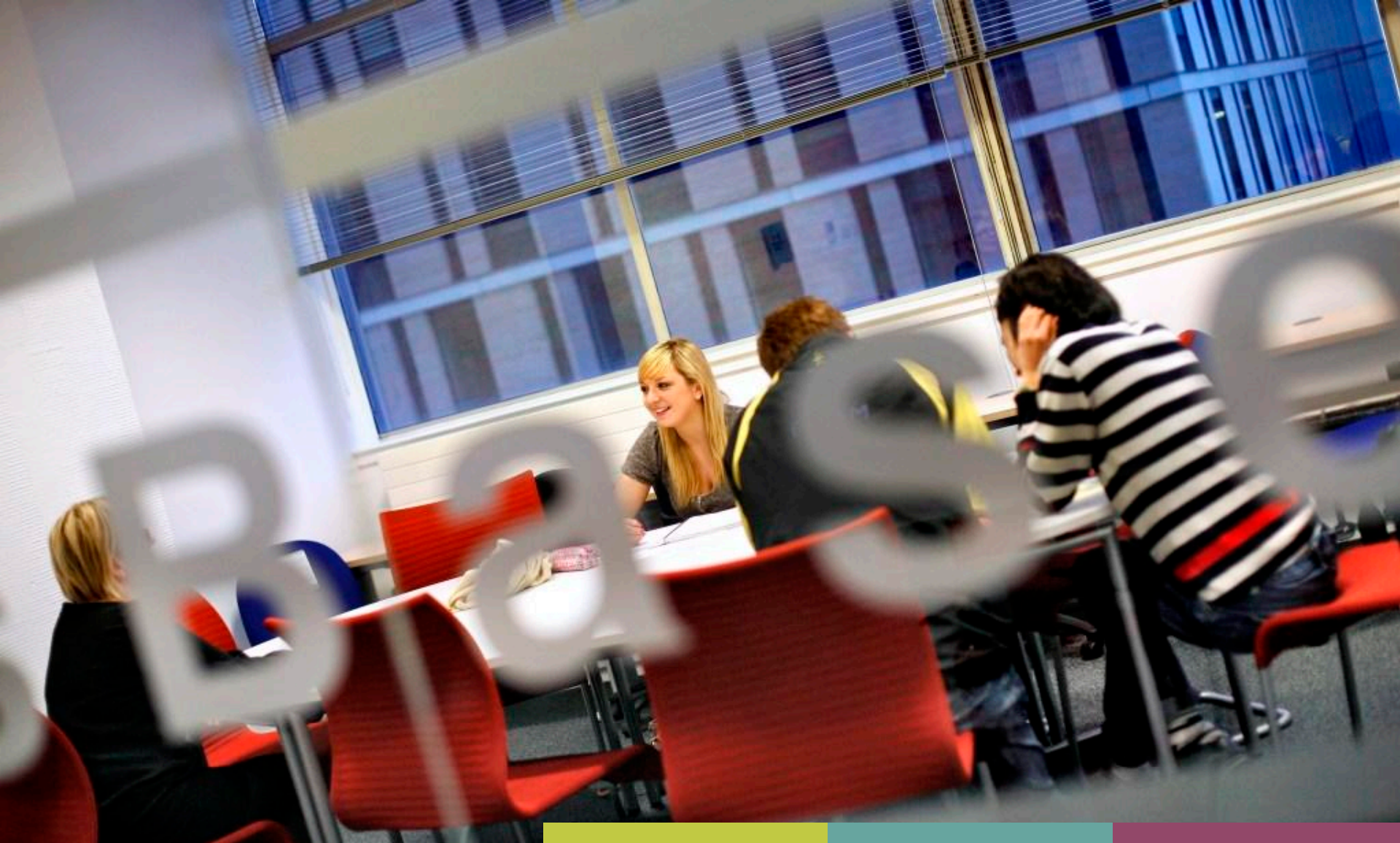


Investing in Facilities

The University is currently investing heavily in new teaching, research and student facilities. For instance:

- 'Informatics Forum' – a purpose-built, £40m centre for the University's School of Informatics (opened 2008)
- University of Edinburgh Business School – new hub for teaching and research
- £42 million, state-of-the-art teaching facility for Veterinary Science students opened last year at the Easter Bush Campus.
- Pleasance Sports Centre recently opened a new £4.8million extension- including state-of-the-art strength training space and a dance studio
- £4 million over the next three years to enhance the student experience.





Degree Structure and What Next?

Rob Batchelor





Flexibility and support

- Flexible degree structure
- Opportunity to try something new & change degree programme

The University of **Edinburgh**



Example degree structure

Year One **English Language 1 English Literature 1 Other Subject A**

Year Two **English Language 2 English Literature 2 Other Subject B**

Options: *English Language, Single Honours Degree*
English Language & Literature, Joint Honours Degree
English Literature, Single Honours Degree

Year Three **English Language**

Year Four **English Language**

The University of **Edinburgh**



Example degree structure

Year One	Informatics 1	Mathematics 1	Other Subject A
Year Two	Informatics 2 (Double course)	Mathematics 2	

Options:

Computer Science (or Artificial Intelligence/ Software Engineering/ Cognitive Science - as Informatics courses common to all), Single Honours Degree
Computer Science & Mathematics, Joint Honours Degree
Mathematics, Single Honours Degree

Year Three	Computer Science & Mathematics
Year Four	Computer Science & Mathematics



Index Page

Introduction

The Degree Regulations and Programmes of Study provides information on the programmes of study offered by the University of Edinburgh, and sets out the regulatory framework and codes that govern the general context of a student's academic career at the University. The University also recognises regulations in respect of those degrees offered by other institutions where appropriate information is provided where appropriate.

DRPS 2010/2011

[Degree Regulations & Programmes of Study 2010/2011](#)



Archive

[Degree Regulations & Programmes of Study 2010/2011 - archive as at 13 January 2011.](#)

[Degree Regulations & Programmes of Study 2010/2011 - archive as at 1 September 2010.](#)

[Degree Regulations & Programmes of Study 2009/2010.](#)

[Degree Regulations & Programmes of Study 2008/2009](#)

[Degree Regulations & Programmes of Study 2007/2008.](#)

[Degree Regulations & Programmes of Study 2006/2007.](#)

[Degree Regulations & Programmes of Study 2005/2006.](#)

[Degree Regulations & Programmes of Study 2004/2005.](#)

DRPS and Calendar Archive

Older versions of the DRPS, and its predecessor the University Calendar, are available from the Communications and Public Affairs Website at the following location.



THE UNIVERSITY of EDINBURGH DEGREE REGULATIONS & PROGRAMMES OF STUDY 2010/2011

DRPS : Degree Programme Tables

Click on a school name to view programmes in that school

College of Humanities and Social Science

- [Humanities and Social Science \(BA\)](#)
- [School of Arts, Culture and Environment](#)
- [School of Divinity](#)
- [The Moray House School of Education](#)
- [School of Health in Social Science](#)
- [School of History, Classics and Archaeology](#)
- [School of Law](#)
- [School of Literatures, Languages and Cultures](#)
- [School of Business](#)
- [School of Economics](#)
- [School of Philosophy, Psychology and Language Sciences](#)
- [School of Social and Political Science](#)

College of Science and Engineering

- [School of Biological Sciences](#)
- [School of Chemistry](#)
- [School of Engineering](#)
- [School of GeoSciences](#)
- [School of Informatics](#)
- [School of Mathematics](#)
- [School of Physics and Astronomy](#)



College of Medicine and Veterinary Medicine



THE UNIVERSITY of EDINBURGH

DEGREE REGULATIONS & PROGRAMMES OF STUDY 2010/2011

DRPS : DPTs : School of Informatics

Click on a programme name to view that programme

Undergraduate Programmes

- [Artificial Intelligence \(BSc Hons\)](#)
- [Artificial Intelligence and Computer Science \(BSc Hons\)](#)
- [Artificial Intelligence and Mathematics \(BSc Hons\)](#)
- [Artificial Intelligence and Philosophy \(MA Hons\)](#)
- [Artificial Intelligence and Psychology \(BSc Hons\)](#)
- [Artificial Intelligence and Software Engineering \(BEng Hons\)](#)
- [Artificial Intelligence with Management \(BEng Hons\)](#)
- [Artificial Intelligence with Psychology \(BSc Hons\)](#)
- [Cognitive Science \(BSc Hons\)](#)
- [Cognitive Science \(MA Hons\)](#)
- [Computational Linguistics \(BSc Hons\)](#)
- [Computer Science \(BEng Hons\)](#)
- [Computer Science \(BSc Hons\)](#)
- [Computer Science and Electronics \(BEng Hons\)](#)
- [Computer Science and Management Science \(BSc Hons\)](#)
- [Computer Science and Mathematics \(BSc Hons\)](#)
- [Computer Science and Philosophy \(MA Hons\)](#)
- [Computer Science and Physics \(BSc Hons\)](#)
- [Computer Science with Management \(BEng Hons\)](#)
- [Informatics \(MInf\)](#)
- [Software Engineering \(BEng Hons\)](#)
- [Software Engineering with Management \(BEng Hons\)](#)



Postgraduate Programmes

[Artificial Intelligence \(MSc\) \(Full-time\)](#)

Degree Programme Table: Computer Science and Mathematics (BSc Hons) (UTC)

Year 1, Academic year 2010/11, Starting month: September

- Notes: Before selecting your outside courses, please ensure you have met your Director of Studies.

COMPULSORY COURSES

This DPT has 10 compulsory course(s).

Code	Course Name
INFR08012	Informatics 1 - Computation and Logic
INFR08013	Informatics 1 - Functional Programming
INFR08014	Informatics 1 - Object-Oriented Programming
INFR08015	Informatics 1 - Data and Analysis
MATH08022	Differential Equation Modelling & Solution
MATH08003	Geometry & Convergence
MATH08004	Group Theory: An Introduction to Abstract Mathematics
MATH08037	Linear Programming & Numerical Analysis
MATH08001	Practical Calculus
MATH08002	Solving Equations



COURSE OPTIONS

Undergraduate Course: Informatics 1 - Computation and Logic (INFR08012)

Course Outline

School	School of Informatics	College	College of Science and Engineering
Course type	Standard	Availability	Available to all students
Credit level (Normal year taken)	SCQF Level 8 (Year 1 Undergraduate)	Credits	10
Home subject area	Informatics	Other subject area	None
Course website	http://www.inf.ed.ac.uk/teaching/courses/inf1	Taught in Gaelic?	No
Course description	The goal of this strand is to introduce the notions of computation and specification using finite-state systems and propositional logic. Finite state machines are widely used, has an interesting meta-theory and has immediate application in a range of situations. They are used as basic computational models and are used successfully in many widely used applications and components. Propositional logic, similarly is the first step in understanding logic which is used in Informatics systems and their properties.		

Entry Requirements

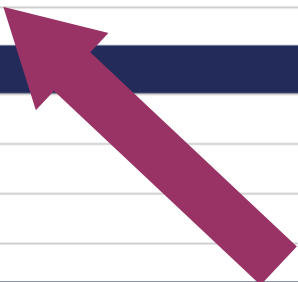
Pre-requisites	Students MUST have passed:	Co-requisites	Students MUST also take: Informatics 2
Prohibited Combinations		Other requirements	SCE H-grade Mathematics or equivalent
Additional Costs	None		

Information for Visiting Students

Pre-requisites	None
Displayed in Visiting Students Prospectus?	Yes

Course Delivery Information

Delivery period: 2010/11 Semester 1, Available to all students (SV1)						WebCT enabled:
Location	Activity	Description	Weeks	Monday	Tuesday	Wednesday
Central	Lecture		1-11			
Central	Lecture		1-11			
First Class	Week 1, Thursday, 11:10 - 12:00, Zone: Central. Lecture Theatre 5, Appleton Tower					
Exam Information						





Flexibility and support

- Personal Tutor assigned to every student
- Range of welfare and support services

The University of **Edinburgh**





What happens next?

Students can respond in a variety of ways:

- UF – Firmly accepted Unconditional offer
- CF – Firmly accepted Conditional Offer
- CF & CI – Firmly accepted Conditional offer plus a Conditional offer accepted as an Insurance
- CF & UI – Firmly accepted Conditional offer plus an Unconditional offer accepted as an insurance

The University of **Edinburgh**





What happens next? ...if the Edinburgh offer is accepted **FIRMLY?**

Provide evidence of completed qualifications - originals required for Medicine

Failure to do so may delay sending of joining instructions

The University of **Edinburgh**





What happens next? ...if accepting UF OR when conditions are met

UCAS will send a confirmation letter.

The institution will then normally send out joining instructions:

- A letter of admission;
- Information about Freshers'/ Induction Week and Matriculation;
- Information to help you prepare for life at Edinburgh.

Depending on the course this may be dependent on a Disclosure Scotland check or a medical examination.

The University of **Edinburgh**





Final preparations

- Complete and return matriculation form
- Accommodation application (if applicable)
- Finalise student finance
- Check MyEd (EUCLID) student portal for updates
- Check EUSA website for Induction Week information
- Pack!

The University of **Edinburgh**





Useful websites:

www.ed.ac.uk/new-students

Information on all aspects of starting as a student at Edinburgh

www.ed.ac.uk/accommodation-services

Details of our accommodation and the online application

www.myed.ed.ac.uk

Edinburgh's student portal – important updates are posted here

The University of **Edinburgh**





Student Finance: The Basics

Melanie Smith





SAAS Who?

- SAAS: Student Award Agency for Scotland
- An agency of the Scottish Government
- Provides financial support to all eligible students doing a course of higher education in the UK
- This will focus on studying in SCOTLAND

The University of **Edinburgh**





SAAS Eligibility

‘Ordinarily resident’

You can check your eligibility on the SAAS website (www.saas.gov.uk)

Residence Conditions:

“Ordinarily resident has been defined in the courts as 'habitual and normal residence in one place'. It basically means that you, your parents or your husband, wife or civil partner live in a country year after year by choice throughout a set period, apart from temporary or occasional absences such as holidays or business trips. Living here totally or mainly for the purpose of receiving full-time education does not count as being ordinarily resident.”

SAAS website, 25th April 2012

The University of **Edinburgh**





SAAS Tuition Fees

If eligible AND studying in Scotland:

1. Cover Tuition Fees

- SAAS pay tuition fees directly to college/university
- You do not pay these back
- You need to apply to SAAS for them to do this
- Yearly application

The University of **Edinburgh**





SAAS Living Costs

If eligible AND studying in Scotland:

2. Provide support for Living Costs

Dependant upon:

- household income
- where you live during term-time

Bursary

- You DO NOT pay back the bursary

Loans

- minimum non-income assessed loan
- income assessed loan
- You DO pay back loans

The University of **Edinburgh**





SAAS Household Income

- If parents live together, SAAS will use both their income
- If parents are separated, divorced or no longer live together, SAAS will use the income of the parent that you normally live with
- If your parent lives with a partner or you have a step parent, SAAS will use their income as well as your parents.

The University of **Edinburgh**





SAAS where you live

- The amount of loan you can apply for depends on your household's income.
- However, there is a minimum (not compulsory) amount of loan available that is not income assessed.

	Max	Min
Living with Parents	£4585	£620
Living elsewhere	£5570	£940

Additional loan

- Max £810 available
- Income assessed – up to £22789

The University of **Edinburgh**





search help

- home
- about us
- student support
- contact us
- faq's
- glossary
- information booklets
- recruitment
- useful links

text size: A | A | A contrast: high contrast | normal contrast

Home > Services > Support calculator

Support calculator

Answer the question below to get a rough idea of how much funding you might get.

Where will you be studying?

- Scottish college of university
- UK college or university outside Scotland but not in London
- A college or university in London

The support package you may get is different if you are studying in Scotland or studying in England, Wales or Northern Ireland.

Where will you be living while you are studying?

- Your parents' home
- A hall of residence or lodgings
- Your own home

The amount of funding you may get depends on where you live while you are studying.

I am -

- a single dependant student (for example, under 25, with no children)
- married or living with a partner
- a single, independent student (for example, over 25)

We will work out the contribution you and your family could make. This is treated as part of your support and may reduce the amount we pay. You can visit the ['student support'](#) section to get more information.

Enter your household income. £



Search search help

- home
- about us
- student support
- contact us
- faqs
- glossary
- information booklets
- recruitment
- useful links

text size: A | A | A contrast: high contrast | normal contrast

Home > Services > Support Calculator

Support Calculator

The funding you may get is shown below.

Results

Tuition Fees	£1820
SAAS to pay	£1820

We will pay your fees straight to your college or university on your behalf.

Young Students' Bursary	
SAAS to pay	£389

You may get this bursary which you do not have to pay back. The bursary you get will replace some of the loan available.

Student Loan	
Non-income-assessed loan	£915
Income-assessed loan	£3763
Your parents' or husband's, wife's or partner's assessed contribution	£903
SLC to pay	£3775

You are entitled to this amount no matter how much your or your family's income is.

This part of the loan depends on the level of your and your family's income. We also reduce it by the Young Students' Bursary you are entitled to.

For further information about assessed contribution, please go to the ['Contributions we Deduct'](#) section of our website.

Total living cost support from SAAS and SLC	£ 4164
--	---------------

This is an estimate of the amount of support you may get.

Back

Go back if you want to enter a different set of details.

[Send us your comments or enquiries.](#)

The average Scottish student spends £6000 - £7000 per (academic) year

Income	Bursary	Loan	Additional Loan	Total
18,000	2,640	2,777	810	6,380
20,000	2,518	2,899	503	6,073
26,000	1,453	3,880	0	5,333
32,000	389	4,278	0	4,667
35,000	0	4,333	0	4,333
41,000	0	3,667	0	3,667
47,000	0	3,000	0	3,000
53,000	0	2,246	0	2,246
58,000	0	1,477	0	1,477
60,000	0	1,170	0	1,170
62,000	0	940	0	940

The University of **Edinburgh**





SAAS Payments

- Bursary entitlements & loans are paid in monthly instalments
- Receive a Loan Payment Schedule a month before course starts
- Payments run over the course start & end dates (not over the summer)
- 1st instalment on the first day of your course (double instalment)
- Then paid on 7th of every month

The University of **Edinburgh**





Loan Repayment

- SLC (Student Loan Company) manage the loan once applied for through SAAS
- Don't start repaying until the April after you graduate or leave the course if earning over £15,795
- Don't pay back until you are earning over £15,795
- Repay 9% of your annual income over £15,795
- Automatically comes off your pay
- Interest linked to inflation
- "Good" debt
- Repayments stop if your earnings drop below the limit

Repayment Examples

Annual salary = £20,795

Income above £15795 = £5000

So, 9% of £5000

Split over 12 months = £37.50 per month – from a monthly after-tax salary of around £1300

Annual salary = £30,795

£112.50 per month from a monthly after-tax salary of around £1,900

Managing your money

A typical weekly expenditure by a student could include:

Approximate Weekly Cost	Self-Catered Flat	Halls- Half Board
Rent / Hall Fees (Includes electricity, heating & contents insurance)	£95	£166
Food	£50	£15 (lunches etc.)
Phone (Landline / mobile – varies depending on package)	£10	£10
TV Licence	£2.80	£2.80
Clothes	£13	£13
Travel	£10	£10
Books, stationery & photocopying	£10	£10
Laundry and toiletries	£8	£8
Fun	£25	£25
Total Approximate Weekly Living Costs	£223.80	£259.80

The University of Edinburgh





Managing your money

Don't

- Overspend, especially in the first term
- Buy every book on the suggested reading list
- Buy non-essentials before essentials!
- Guess at what you're spending
- Keep friends and family in the dark

Do

- Take advantage of free banking facilities
- Ask for help if you need it!
- Do explore other sources of funding

The University of **Edinburgh**





Other sources of support

- University Bursaries & sponsorship
- Supplementary grants
- Discretionary Loans & Funds
- Savings
- Overdraft/credit card
- Part-time job
- Working (perhaps full-time) during summer breaks

Access Bursaries

Each year, we award in the region of £730,000 as part of the Access Bursary Scheme to UK students.

More than 200 new awards are made annually with students receiving a minimum of £1,000 per academic session to contribute to maintenance costs.

The closing date for bursary applications for 2011-2012 academic session is **1 April 2011**.

Further details of what bursaries may be available to you can be obtained from the Scholarships and Student Finance Office.

- [Access Bursaries](#)

Accommodation Bursaries

90 bursaries are available for first year entry to first year undergraduate students living in University accommodation.

Each bursary has a value of £1,000 which will be paid directly to Accommodation Services towards the cost of accommodation.

These bursaries are awarded on the basis of significant financial need.

The closing date for bursary applications for students starting their studies in 2011 is **1 April 2011**.

Full details of the eligibility criteria and the application procedure can be obtained from the Scholarships and Student Finance Office

- [Accommodation Bursaries](#)

Industrial Scholarships

Most of our industrial scholarships award around £1,000 for each year of your undergraduate programme of study and involve a paid placement with a company during the summer months.

Eligible students of biological sciences, chemistry, engineering or informatics can apply.

Scholarship opportunities also exist for those who have achieved the best entrance qualifications in physics and mathematics.

A number of companies, who also offer work placements during the summer months, fund these scholarships.



Scholarships and Student Funding Services



Scholarships and Student Funding home

Prospective undergraduates

Prospective postgraduates

Other financial support

Tuition fees

Current students

Staff Scholarships

About us

News and events

Scholarships search

[University Homepage](#) > [Schools & departments](#) > [Scholarships and Student Funding](#) > [Other financial support](#) > [Charitable trusts](#) > [National trusts](#) > [The Vegetarian Charity](#)

National trusts

The Vegetarian Charity

Grants for people up to the age of 25 in financial need who are vegetarian or vegan. The Charity can also award grants for children being brought up to be vegetarian where the parents are in financial need.

Students can apply for one-off and recurrent grants for specific courses or projects ranging from £100 to £1000. Grants are also given to mature students for child care costs/school uniform etc

For an application form contact The Vegetarian Charity.

The Vegetarian Charity

The Grants Secretary

PO Box 473

Crewe , CW3 0WU

Email: grantssecretary@vegetariancharity.org.uk

Web: www.vegetariancharity.org.uk

Overview

BrightsideUNIAID

Educational Grants

Advisory Service

The Leverhulme Trade Charities Trust

The Gen Foundation Scholarships

The Newby Trust

The Studley College Trust

The Thomas Wall Trust

The UK eInformation Group

The Vegetarian Charity

Women's Careers Foundation

This article was published on Apr 19, 2010

The logo for SAAS (Study Abroad Application System) features the letters 'SAAS' in a bold, white, sans-serif font centered within a dark blue rectangular background. A thin white horizontal line is positioned below the text.

SAAS

How do you apply?

- Apply online via SAAS
- www.saas.gov.uk
- Apply from the April/May of year of entry
- Can apply with a conditional offer
- Support assessment made and sent to student

The University of **Edinburgh**





At University...

Neil Speirs



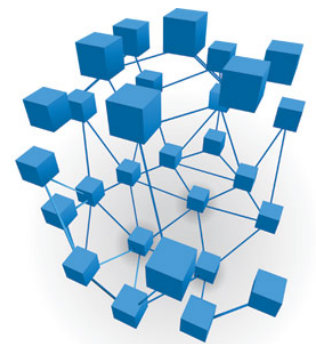
At University.....

A successful student will integrate, both intellectually and socially, into their new environment.

One is more important than the other?

Both the student and the university have a role in facilitating this process.

Consider, in a little more detail, the role of the university.



At University.....

How does the University of Edinburgh assist intellectual integration?

- a) The actual learning environment.
- b) The Personal Tutor system.
- c) Peer support in various formats.
- d) The social operators on the next page.

The student needs to engage appropriately with each of these ‘operators’ to integrate intellectually.



The University of **Edinburgh**



At University.....

How does the University of Edinburgh assist social integration?

- a) The academic operators on the previous page.
- b) Joining student societies.
- c) Peer support in various formats.
- d) University support systems such as; Advice Place, Careers, Accommodation, Disability Office, Counselling, Chaplaincy, Health Service.

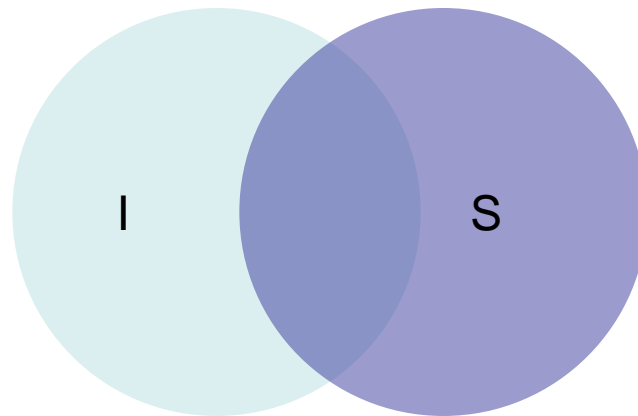
The student needs to engage appropriately with each of these 'operators' to integrate socially.



At University.....

It's not possible to completely separate the intellectual and social.

These two headlines, broadly categorise everyday student life events.





Student Life & Accommodation

Lesley Stokes





University Accommodation

Over 4,000 first-year students live in University accommodation

Centrally located – easy access to teaching facilities and city centre

All rents include: central heating, regular cleaning and personal contents insurance

Also **data & telephony services** from individual study bedrooms give:

- 24-hour access to the University's intranet
- 24-hour access to the internet (with download restrictions)
- Chargecards required for external calls

The University of **Edinburgh**





Self Catered or Catered?

- Huge variety of accommodation
- 2012/13 rents range from:
 - £56.42 (shared room, self-catered)
 - £230.79 per week (superior, ensuite studio)
 - based on 37 week lets (including Christmas & Easter)
- Rent includes central heating, phone /data facilities, cleaner and contents insurance
- Catered – 14 meals per week
- Flat Managers, Wardens, Assistant Wardens

The University of **Edinburgh**









Guarantee of accommodation

- All **new students** from **outside Edinburgh** are guaranteed a place in university accommodation if
 - they have applied for accommodation by 16 August 2012
 - are UF by 30 August
- Students who are holding a CI offer should note that their accommodation guarantee is only for shared accommodation. However, they can still request a single room and Accommodation Services will allocate this if demand allows.

The University of **Edinburgh**



Students from Edinburgh

If you come from within the city of Edinburgh, you can still apply for accommodation (and be placed on a waiting list), as spaces often become available once the semester has begun.

Students in LEAPS Group 1 schools will be guaranteed a place in accommodation - if they are interested - and should register for a place online via the waiting list.

The University of **Edinburgh**





After First Year?

- **University accommodation:**
300+ flats are reserved for continuing students & applications are received during the spring semester, although there is no guarantee of accommodation.
- **Private accommodation:**
Most students choose to go into privately rented flats with friends. Accommodation Services and EUSA can assist students in finding private accommodation in Edinburgh. See also www.studentpad.co.uk

The University of **Edinburgh**





The Student Experience

- Cosmopolitan student body & opportunity to study abroad
- Excellent sports facilities – opportunity for everyone to get involved
- Active Students' Association – runs 5 students' union buildings and 230 student societies

The University of **Edinburgh**





Once you arrive...

Induction Week:

- Matriculate
- Attend Welcome Meetings and Induction Events
- Meet Personal Tutor / Student Support Officer
- Decide on outside courses etc.
- Practicalities (e.g. register with a doctor)
- First Semester begins!...





Surviving the First Semester

Freshers' Week:

- Settling in and making friends
- Finding your way around
- Edinburgh University Students' Association (EUSA)
- Societies Fair

The University of **Edinburgh**



[Show All](#)

◀ March 2011 ▶

[Bring out the Calendar](#)

Filter by type

[Other](#)[Open Mic](#)[Theatre](#)[Literature](#)[Film](#)[Comedy](#)[Club](#)[Live Music](#)[Dance](#)

Filter by Venue

[Pleasance](#)

Tuesday 15th March



'The BIG RED Variety Show' for Comic Relief at Teviot

The Big Red Variety Show is a night of live entertainment from across the university in order to raise money ...

[BUY NOW](#)

KB Quiz at Kings Buildings

The much loved Quizzes are rumoured to be some of the BIGGEST QUIZZES in the Northern hemisphere! Be part of ...

[FREE](#)

WRITER
TONY ROBERTS
CAROL KANE
PAULA SIMON
SHELLE DUVAL
JANET MARCO
COLLEEN

Film Soc Screenings - Annie Hall at Teviot

The Film Society are back with another eclectic mix of films across all genres - there's something for everyone! Membership ...

[FREE](#)

COMEDY CENTRAL LIVE FEAT: TIERNAN DOUIEB & BARRY CASTAGNOLA at Pleasance

Tiernan has been doing the stand-up thing for a little while now. In that time he's graced many a stage ...

[BUY NOW](#)

Wednesday 16th March



The Pirates of Penzance at Pleasance

EUSOG is proud to present the Gilbert and Sullivan classic "The Pirates of Penzance" for their 50th

A-Z of Student Societies...

Aberdeen FC Supporters Club (EU)
African & Arabic Dance Society
African & Caribbean Society
African Relations Circle
AIESEC
Air Squadron
Amnesty International
Anime and Animation Society
Archaeology Society
Architecture Sans Frontier Society
Art Society
Baha'i Society
Ballroom Dance Society
Barnardo's Society
Bhangra Crew
Big 2
BioSoc
Bisexual Lesbian or Gay BLOGS
Brass Band
Bridge Club
Bright Futures Edinburgh
Buddhist
Bulgarian Society
BUNAC
Capoeira Society
Catholic Students' Union
Celtic Supporters Club
Chamber Choir
Chamber Orchestra
Changeringers (Guild of)
Charity Fashion Society
Cheerleading Society 'The Vixens'

Chemical Engineering Society
Chemical Society
Chess Club
Chi Soc
Childrens Holiday Venture
Chill Out Society
Chinese Cultural Society
Chinese Students' Association
Choc Soc
Christian Union
Classics Society
Clinical Psychologists in Training
Comedy and That
Composers' Orchestra
Computer Society
Confucianism Study Society
Conservative & Unionist Association
Create Society
Debates Committee
Diabetes Society
Diagnostic Society
Dirty Weekenders (Conservationists)
Drumming Society
Duke of Edinburgh Award
Economics
Edinburgh Exchange Support Society
Edinburgh Global Partnerships
Edinburgh Worshippers of Cthulhu Society
Engineering
Engineers Without Borders Edinburgh
English Language and Linguistics Society
English Literature Society

Entrepreneurial Society
Exmoor Pony Trekking Section
Exped
Fair Trade Café
Film Society
First Aiding Society
Flamenco
Folk Song Society
Fonelisco Orphanage Project Society
Football Supporters Association
Footlights
Formal Attire Running Club of Edinburgh
Frequently Asked Questions Society
Fresh Air (Student Radio)
GameSoc
GEAS (Roleplaying)
Geography Society
Geolsoc
German Society
Goth and Rock Society
Hellenic Society
Highland Society
History Society
Hitch
Hong Kong International Society
Humanist Society
Hung Ga Appreciation Society
iCUE
Indie
Ink Magazine
International Relations Forum

The University of **Edinburgh**



A-Z of Student Societies...Continued!

Irish
Islamic Society
Italian Society
Japanese
Jazz Orchestra
Jewish Society
Juggling Society
Korean Society
Labour Club
Law Society
Liberal Democrats
Malaysian Students
Marrow Society
Mathematics & Statistics
Mature & Grad Medics
Mature Law Students' Society
Meadow's Half Marathon
Medics
Mediterranean Gastronomic
MedSIN-UK
Mexicanos En Edimburgo
Middle Eastern Society
Model United Nations
Modern Dance Society
Movie Production Society
Music Society
Musical Medics Society
New Scotland Country Dance
Nightline
Nomad Magazine
Nursing Society
Officers Training Corps
Oxvol (Oxfam Volunteers)
Palestine Solidarity Society
People & Planet
Persian Society
Philosophy Society
Photographic Society
Physics Society
Pizza Hereos
Poker Society
Politics Society
Pool Society
Portuguese & Brazilian Society
Postgrad Society
Pro Evolution Soccer Society
Psychology Society
Reeling Club
Renaissance Singers
Revelation Rock Gospel Choir
Romanian Society
Russian Society
Save the Animals Campaign
Savoy Opera Group
Scandinavian Society
Science Fiction & Fantasy
Scottish Ethnology Society
Scottish Romanian Language Link (SCROLL)
Scottish Socialist Students' Society
Self defence Society
Shekter Soc
Sign Society
Singapore Students
Singers (EU)
Snooker Society
South Asian Society
Spanish and Latino Society
Standing Ovation
Stop Aids
String Orchestra
Student Action for Autism
Student Action For Refugees (STAR)
Student Cancer Fund
Student Christian Movement
Student Newspaper
Student Scout and Guide Organisation
Students Supporting Street Kids (SSSK)
Studio Opera
Swahili Club
Swing Dance Society
Tai Chi Chuan
Taiwanese Society
Tango
Tennent's Lager Appreciation Society
Theatre Company (Bedlam)
Tibet Society
Trading & Investment Club
Travel Society
Twisters Association
Untapped Talent
Vedic Society
Veterinary Zoological
Wargames
Water of Life
Welsh Society
Yoga Society

The University of **Edinburgh**



Student Sport Clubs

Archery Club
Association Football Club M
Association Football Club F
Athletics Club
Badminton Club
Basketball Club
Boat Club
Boxing Club
Canoe Club
Cricket Club
Cross Country
Curling Club
Cycling Club
Exmoor Pony Trekking S.
Fencing Club
Gliding Club
Golf Club
Hare & Hounds
Hillwalking Club
Hockey Club (Male)
Hockey Club (Female)

Hot Air Balloon Club
Ice Hockey Club
Judo Club
Ju Jitsu Club
Karate Club (Shotokan)
Karate Club (Shukokai)
Kendo Club
Korfball Club
Lacrosse Club F
Lacrosse Club M
Motor Sport Club
Mountaineering Club
Netball Club
Orienteering Club
Rifle Club
Roller Hockey Club
Rugby Club (Male)
Rugby Club (Female)
Sailing Club
Shinty Club
Skydiving Club



Snowsports Club
Squash Club
Sub Aqua Club
Swimming & Water Polo
Club
Table Tennis Club
Tennis Club
Trampoline Club
Triathlon Club
Ultimate Frisbee Club
Volleyball Club
Weightlifting Club
Windsurfing & Surfing Club

The University of **Edinburgh**



Surviving the First Semester

Studying

- New methods of teaching and learning e.g. lectures, seminars and group work
- More choice and flexibility, but less structure
- More independence – and more responsibility

The University of **Edinburgh**





Sources of help

- Welfare & support services:
 - Advice Place
 - Disability Office
 - Health Centre
 - Study support advisers
- Edinburgh University Students' Association (EUSA)
- Friends
- Parents

The University of **Edinburgh**





And finally...

- LEAPS Summer School?
- “Moving on”





Student Panel





Any questions?

